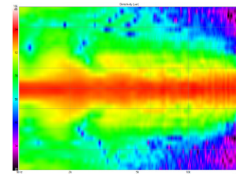
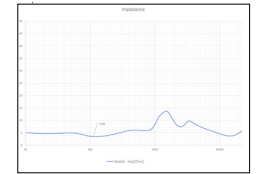


Horizontal Directivity



Vertical Directivity



Impedance

MODEL S7i-LR



TECHNICAL SPECIFICATIONS



Based largely on our flagship S7t. Here we have adapted the design for inwall applications. Shallow 4" mounting depth and integral aluminum extrusion rear enclosure insure consistent performance and minimal sound propagation to adjacent rooms. Featuring our proprietary DPC-Array controlling Mid/High frequencies, centered by our finest 28mm Beryllium dome and dual 28mm TPCD ultra-lightweight domes. All transducers are developed ground up by our engineers – bringing decades of research, culminating in this world class design. We teamed up with companies in the USA and Sweden to bring modern material science to hi-fi. Utilizing advanced Comsol acoustical modeling, our DPC-array is the result of 18 months of painstaking simulations and prototyping. The result is one of the most technologically advanced loudspeakers available. This new tweeter/waveguide DPC-Array delivers amazing accuracy, smoothness, and directivity control to handle the critical vocal range and delicate treble. All S-Series speakers share the same DPC-Array and benefit from our unique timbre matching technique across the entire series. The PerListen S7i is the world's first and only inwall loudspeaker to be certified for THX Dominus - their highest rating. A mark of achievement.

BASIC

Dimensions (HxWxD)
1036.6 x 298.6 x 111.2mm
40.8 x 11.8 x 4.4"

Mounting dimensions (HxWxD)
996 x 257 x 101.7mm
39.2 x 10.1 x 4.0"

Weight
26.4 kg (58.0 lbs.)

Available finishes
White

TECHNICAL

Enclosure Alignment
4-way acoustic suspension

Driver complement
DCP-Array: 28mm Beryllium
28mm(2) Textreme TPCD
Woofers: 180mm(4) Textreme TPCD

Sensitivity
91.9dB / 2.83v / 1.0m

Impedance
4Ω nominal / 3.4Ω min

Response Linearity
80 - 20kHz +/-1.5dB window

Frequency Response (-10dB)
45 - 37kHz

Typical In Room bass extension
37Hz

Recommended Amplifier Power
100 - 600W RMS

SPL capability @1m (100-20kHz)
119.7dB peak
117.0dB peak <3% 2nd, 3rd Harmonics

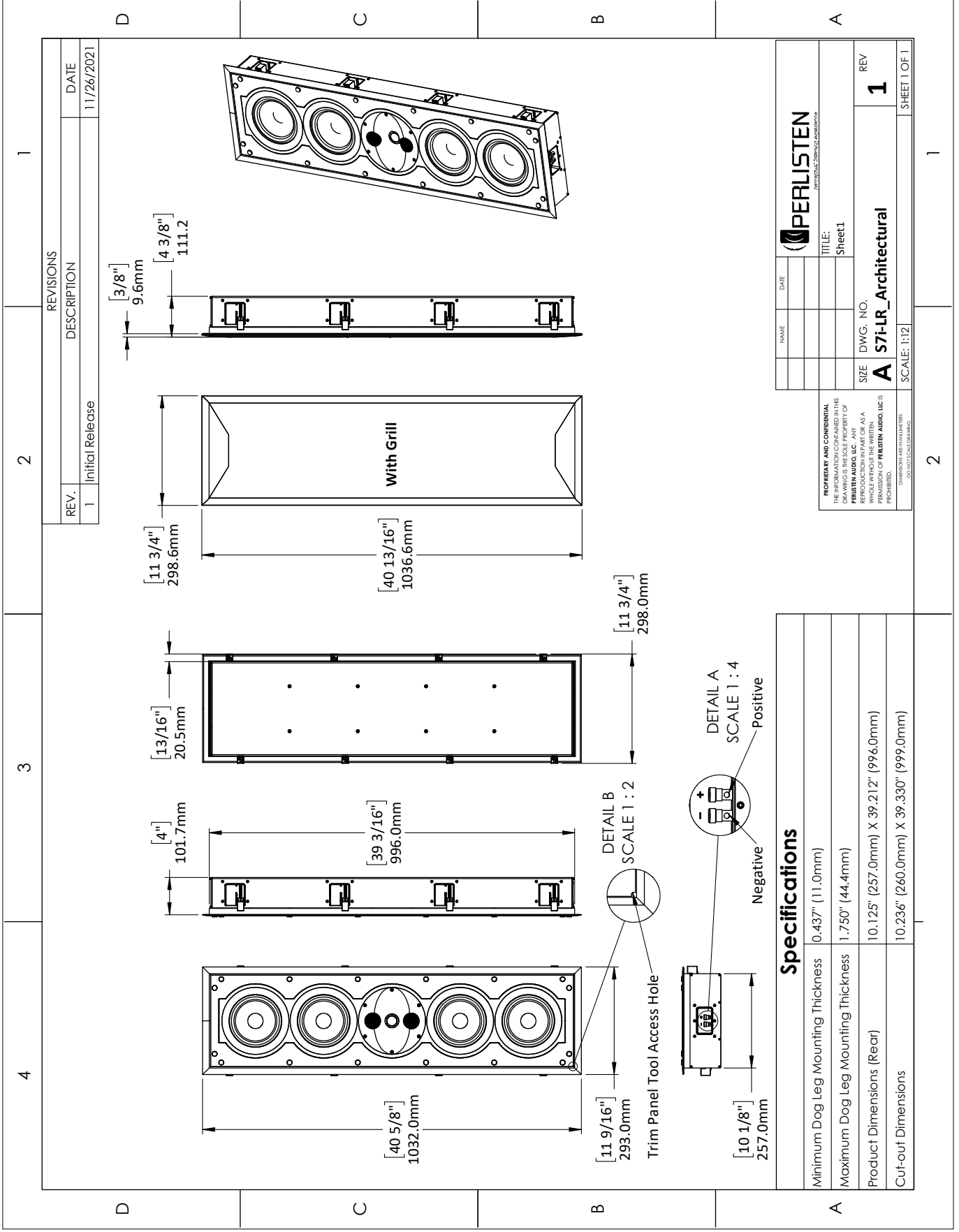
Certification
THX Dominus



DPC Array
Directivity pattern control
*USA Patent pending



TPCD
Thin Ply Carbon Diaphragms



4

3

2

1

D

C

B

A

D

C

B

A

2

1

SCALE: 1:12

SHEET 1 OF 1

[40 5/8"]
1032.0mm

[11 9/16"]
293.0mm

Trim Panel Tool Access Hole

DETAIL B
SCALE 1 : 2

[10 1/8"]
257.0mm

Negative

DETAIL A
SCALE 1 : 4

Positive

[4"]
101.7mm

[13/16"]
20.5mm

[11 3/4"]
298.6mm

[40 13/16"]
1036.6mm

With Grill

[11 3/4"]
298.0mm

[3/8"]
9.6mm

[4 3/8"]
111.2